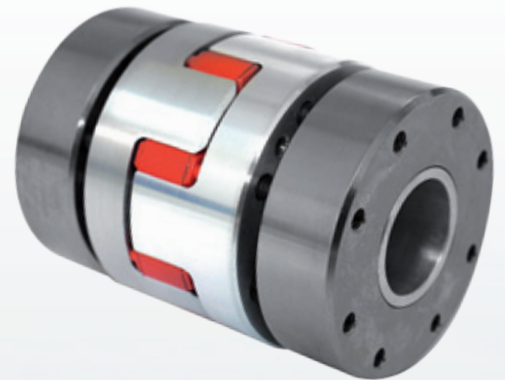
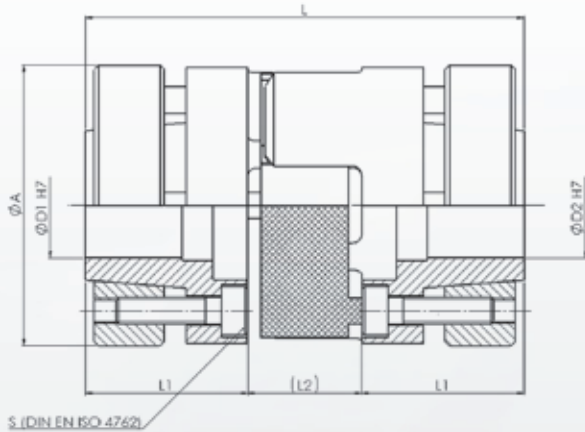


WKE/S 14-65

Elastomerkupplung WKE/S / mit Spannring
 Servo-insert coupling WKE/S / with clamping ring



Bestellbeispiel WKE/S-28 - 20H7 - 24H7
 Ordering Example Typ / Type \varnothing D1 \varnothing D2

| Material | Typ / Type | Abmessung / Dimensions (mm) | | | | | | Technische Daten / Technical Ratings | | | | | |
|---------------|------------|-----------------------------|-----|--------|------|----|-----------------------------|--------------------------------------|--------------|------|-------------------------|-------------|-------------|
| | WKE/S | ØA | L | ØD1-D2 | L1 | L2 | S (DIN EN ISO 4762) TA (Nm) | TA (Nm) | rpm. (1/min) | g | J (kg cm ²) | 98 ShA (Nm) | 92 ShA (Nm) |
| Aluminium | 14 | 30 | 50 | 6-14 | 18,5 | 13 | M3 | 1,34 | 25000 | 52 | 6,5 | 12,5 | 7,5 |
| | 19 | 40 | 66 | 10-20 | 25 | 16 | M4 | 2,9 | 18500 | 122 | 32 | 17 | 10 |
| | 24 | 55 | 78 | 16-26 | 30 | 18 | M5 | 6 | 13900 | 284 | 138 | 60 | 35 |
| | 28 | 65 | 90 | 19-38 | 35 | 20 | M5 | 6 | 11800 | 455 | 310 | 160 | 95 |
| | 38 | 80 | 114 | 22-42 | 45 | 24 | M6 | 10 | 9600 | 952 | 960 | 325 | 190 |
| Stahl / Steel | 42 | 95 | 126 | 28-50 | 50 | 26 | M8 | 35 | 8000 | 2300 | 3500 | 450 | 265 |
| | 48 | 105 | 140 | 35-60 | 56 | 28 | M10 | 69 | 7100 | 3100 | 5200 | 525 | 310 |
| | 55 | 120 | 160 | 40-65 | 65 | 30 | M10 | 69 | 6350 | 4700 | 10200 | 685 | 410 |
| | 65 | 135 | 185 | 45-70 | 75 | 35 | M12 | 120 | 5600 | 6680 | 19000 | 1040 | 900 |

Übertragbare Drehmomente (Nm) nach Bohrungsdurchmesser

Transmissible torque (Nm) acc. bore diameter

| WKE/S | Übertragbare Drehmomente (Nm) der Nabe / Bore Size (mm) Transmissible torque (Nm) of the coupling | | | | | | | | | | | | | | | | | | | | | | | |
|-------|---|------|------|------|----|----|-----|-----|-----|-----|-----|-----|-----|-----|-----|------|------|------|------|------|------|------|------|------|
| | 6 | 10 | 11 | 14 | 15 | 16 | 19 | 20 | 24 | 25 | 28 | 30 | 32 | 35 | 38 | 40 | 42 | 45 | 48 | 50 | 55 | 60 | 65 | 70 |
| 14 | 8,6 | 13,8 | 14,7 | 22,7 | | | | | | | | | | | | | | | | | | | | |
| 19 | | 41 | 45 | 62 | 68 | 67 | 83 | 90 | | | | | | | | | | | | | | | | |
| 24 | | | | | | 72 | 90 | 97 | 112 | 120 | | | | | | | | | | | | | | |
| 28 | | | | | | | 189 | 188 | 237 | 250 | 280 | 307 | 310 | 353 | 389 | | | | | | | | | |
| 38 | | | | | | | | | 337 | 356 | 398 | 436 | 424 | 501 | 533 | 572 | 585 | | | | | | | |
| 42 | | | | | | | | | | | 445 | 506 | 470 | 566 | 581 | 647 | 630 | 728 | 836 | 858 | | | | |
| 48 | | | | | | | | | | | | | | 955 | 999 | 1092 | 1091 | 1230 | 1381 | 1334 | 1540 | | | |
| 55 | | | | | | | | | | | | | | | | 1052 | 1040 | 1185 | 1220 | 1318 | 1359 | 1646 | 1662 | |
| 65 | | | | | | | | | | | | | | | | | | 1768 | 1833 | 1968 | 2049 | 2438 | 2495 | 2898 |

- Option: Standard Zahnkranz: 98 Sh (rot)
Zahnkranz auch in 64ShD + 92 Sh erhältlich
- Material: Spannringe aus Stahl

- Option: Standard insert: 98 Sh (red)
Insert also available in 64ShD + 92 Sh
- Material: Clamping ring in steel