

IRR/RC Remote controls/Foot switches

Infrared remote control - IRR Set-Light

Features:

Keys:.....6 soft touch keys
Memory:.....2-fold
Display:.....none
Motor groups:.....max. 2
Channels:.....2
Contains:.....Remote control and receiver
Useable with:.....LS / LB



RC-Remote control - FF LD/7

Features:

Keys:.....2 soft touch keys
Memory:.....none
Display:.....none
Motor groups:.....max. 2
Channels:.....2
Contains:.....Remote control and receiver
Useable with:.....LS / LB
Frequency:.....433MHz



Foot switch - EL-FUSS-LD/7

Features:

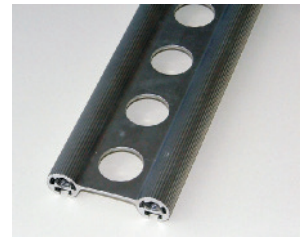
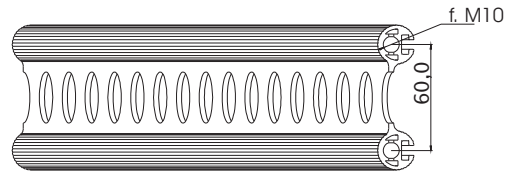
Buttons:.....2 rocker switches
Memory:.....none
Display:.....none
Motor groups:.....max. 1
Cable length:.....min. 0,7m; max. 1,7m
Useable with:.....LS / LB



Accessoires Fittings/Adapters

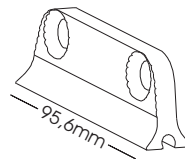
Cross bar VR60

Material: Alloy (AW-6063-T66)
 Surface: powder coating optional
 Design: perforated optional
 Useable: all table legs
 Length: up to 5.000 mm max.
 Art-Nr.: **VR60-xxxx** (Length in mm)



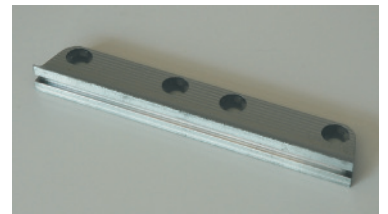
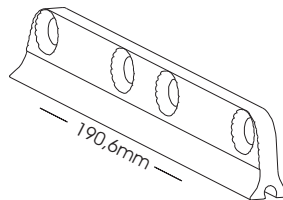
Adapter A32-single for VR 60

Material: Alloy (AW-6063-T66)
 Surface: powder coated RAL 9006
 Design: for single cross bar VR 60
 Useable for: T180/3; T180S; T165AP
 Art-Nr.: **A32-einfach**



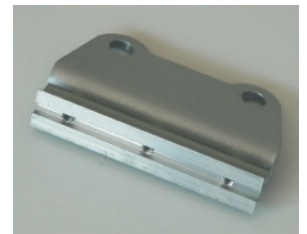
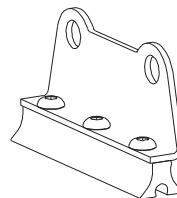
Adapter A32-double for VR 60

Material: Alloy (AW-6063-T66)
 Surface: powder coated RAL 9006
 Design: for double cross bar VR 60
 Useable for: T180/3; T180S; T165AP
 Art-Nr.: **A32-doppelt**



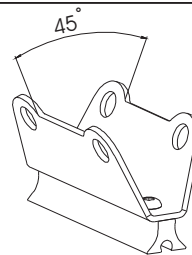
Adapter A32-0

Material: Alloy (AW-6063-T66), steel
 Surface: powder coated RAL 9006
 Design: for single cross bar VR 60, ankle 0°
 Useable for: T180/3; T180S; T165AP
 Art-Nr.: **A32-0**



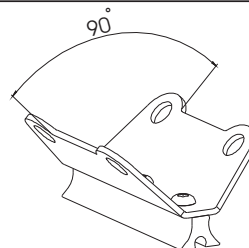
Adapter A32-45

Material: Alloy (AW-6063-T66), steel
 Surface: powder coated RAL 9006
 Design: for single cross bar VR 60, ankle 45°
 Useable for: T180/3; T180S; T165AP
 Art-Nr.: **A32-45**



Adapter A32-90

Material: Alloy (AW-6063-T66), steel
 Surface: powder coated RAL 9006
 Design: for single cross bar VR 60, ankle 90°
 Useable for: T180/3; T180S; T165AP
 Art-Nr.: **A32-90**



Mounting samples

