

Accessoires Fittings/Foot

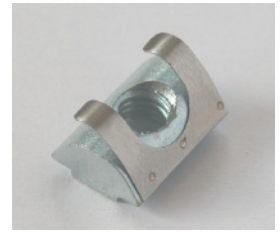
Slot nut- T180/3; T180S; T165AP

Material: Steel
Surface: zinc plated
Design: with 2 x M6 Thread
Useable for: T180/3, T180S, T165 AP
Length: 80mm
Art-Nr.: **267602**



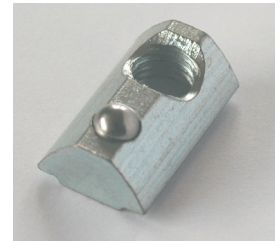
Slot nut- T175/3; T175/2; T175mini

Material: Steel
Surface: zinc plated
Design: snap-in strike plate M6 thread
Useable for: T175/3; T175/2; T175mini
Art-Nr.: **096086F**



Slot nut- I140MI; I140ST - M6

Material: Steel
Surface: zinc plated
Design: snap-in with spring loaded ball M6
Usable for: I140MI; I140ST
Art-Nr.: **096026**



Slot nut- I140MI; I140ST - M8

Material: Steel
Surface: zinc plated
Design: snap-in with spring loaded ball M8
Usable for: I140MI; I140ST
Art-Nr.: **096028**



Slot nut - I67; TR126/3; TR126/2; TR126mini

Material: Steel
Surface: zinc plated
Design: M6 thread
Useable for: I67; TR126/3; TR126/2; TR126mini
Art-Nr.: **13440026-01**



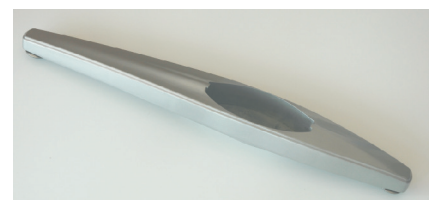
Slot nut bar- I67-Runner

Material: Steel
Surface: zinc plated
Design: L= 160mm; 3 x M6 thread
Useable for: I67; TR126/3; TR126/2; Tr126mini
Art-Nr.: **28.0.011.00**



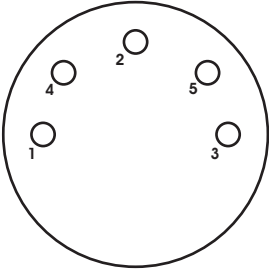
Foot T180/3; T180S asymmetrical

Material: Alloy casting - ENAC-46 00
Surface: powder coated RAL 9006
Design: L= 764mm; with 2 adjustable sliders
Useable for: T180/3; T180S
Art-Nr.: **24.0.017.00**



Plug connection

Soldered side plug

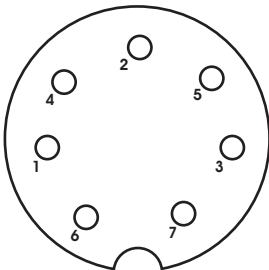


- 1 = common + 24 V (white)
- 2 = up Motor 1 (brown)
- 4 = down Motor 1 (yellow)
- 3 = up Motor 2 (green)
- 5 = down Motor 2 (grey)

The colour codes refer to Baumeister cable connection. This plug is used on all Sy1 control boxes.

MAS50S DIN 41524

Soldered side plug



Code	HS 1	HS 2	HS 3	HS 4
up	1	0	0	0
down	0	1	0	0
Memo	0	1	1	0
Pos 1	0	0	1	0
Pos 2	0	0	0	1
Pos 3	0	1	0	1
Pos 4	0	1	1	0
Pos 5	0	1	0	1
Pos 6	0	1	1	1

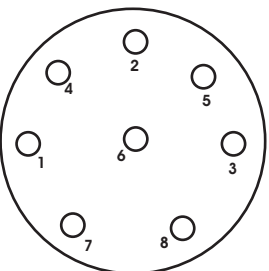
connection

- 1 = HS_Ser out
- 2 = HS 3
- 3 = HS 1
- 4 = HS 4
- 5 = HS 2
- 6 = HS_+ 5 V = 1
- 7 = HS_Earth = 0

MAS70S_LD DIN 45329

This plug is used on Control Boxes Type CBS, Logic S, Logic B, Compact

Soldered side plug

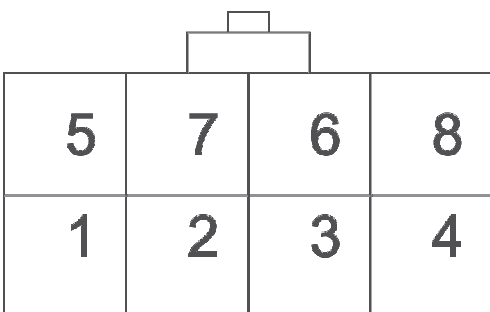


- 1 u. 7 = Motor + (-), (yellow)
- 2 u. 4 = Motor - (+), (grey)
- 5 = Hall Transmitter earth (brown)
- 3 = Hall Transmitter + 5 V (white)
- 8 = Hall Transmitter 1 open collector output (green)
- 5 = Hall Transmitter 2 open collector output (blue)

The colour codes refer to Baumeister-cable connection. Hall Transmitter 1 und 2 are optional

MAS80S DIN 41524

Frontview Female Connector



- 1=yellow Motor (plus means up)
- 3=white Hallsensor + 5VDC
- 4=green Hallsignal 1
- 5=blue Hallsignal 2
- 7=brown Hallsensor GND
- 8=grey Motor

Molex type connector